



Stream movies, music and photos to all your devices

Turn any Internet connection into a Wi-Fi hotspot

Wirelessly expand your iPad® and phone storage



## SharePort™

Mobile Companion

### Product Highlights

Stream your media to your iPhone, iPad or Android devices using the free SharePort Mobile App

Wirelessly add storage to your mobile device

Transform any internet connection into a Wi-Fi hotspot

Great wireless travel router

Charge your iPhone, iPad and Android devices

Compact design with foldable plugs

### What this product does

Get the best of all worlds with the handy little SharePort™. Imagine being able to share your videos, music and photos from any external hard drive or USB thumb drive to any iPad®, iPhone® or Android® mobile device in your home. And, the SharePort isn't just for your home. If you want to take the SharePort on the road with you, it works as a great travel router/access point, so you can get instant wireless from any hotel or conference room where a network already exists. While you're out and about, the SharePort can also charge your iPhone®, iPad® or Android® device.

DIR-505L

### Package Contents

- SharePort™ All-in-One Mobile Companion
- Ethernet Cable
- Quick Install Guide
- Wi-Fi Configuration Card

### Minimum System Requirements

#### Computer with:

- Window 7<sup>®5</sup>, Windows Vista<sup>®5</sup> Windows<sup>®</sup> XP SP2<sup>5</sup> or Mac OS X (v10.7)
- Internet Explorer<sup>®</sup> v7, Mozilla<sup>®</sup> Firefox<sup>®</sup>, Google Chrome or Safari 4
- 20MB Hard Disk Space
- Network Interface Card

#### Power Input/Output:

- Input: 100-240V, 50/60Hz
- Output: 5V, 1.2A

#### For Internet Access:

- Cable or DSL Modem for High Speed Internet Connection
- Subscription to an Internet Service Provider (ISP)
- For Wireless N Performance, an 802.11n adapter is required

#### Mobile Apps:

- SharePort Mobile App Requires iOS 4.3 or higher, and Android 2.0 or higher
- QRS Mobile App Requires iOS 4.3 or higher, and Android 2.0 or higher

### Features

- Multiple Operation Modes, Router/Access Point, Repeater and Wi-Fi HotSpot Modes to Create Different Usages
- Power Charging Mode
- IEEE 802.11n and 802.11g Compliant<sup>1</sup>
- Mode Selector Switch
- One 10/100 LAN/WAN Port<sup>2</sup>
- USB 2.0
- Mac Support
- Charges most USB powered devices including Smartphones and tablets (up to 6 Watts)
- Supports Secure Wireless Encryption Using WPA or WPA2
- Wi-Fi Protected Setup (WPS) Push Button
- SharePort™ Web File Access Support (Router and Wi-Fi Hotspot Mode Only)
- SharePort™ Mobile App for iPhone®, iPad® and Android® mobile devices (Router and Wi-Fi Hotspot Mode Only)
- QRS Mobile App for iPhone®, iPad® and Android®
- Wall-plug Design for More Convenient Use
- Elegant Design and Compact Size - Does Not Block Other Outlets
- D-Link One-Touch AP Configuration
- Guest Zone Support
- 24/7 Basic Installation Support<sup>3</sup>
- 1-Year Limited Warranty<sup>4</sup>

### With this product

Create a Wi-Fi hotspot for all your mobile devices

Watch videos from a USB drive

Share your videos and pictures with friends

Charge your iPhone®

### What you needed before

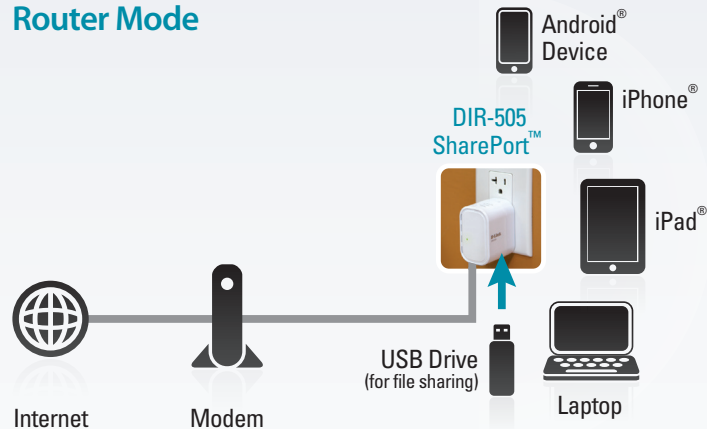
Travel router

High-end router with USB sharing capability

Online sharing site or DropBox subscription (if over 2GB)

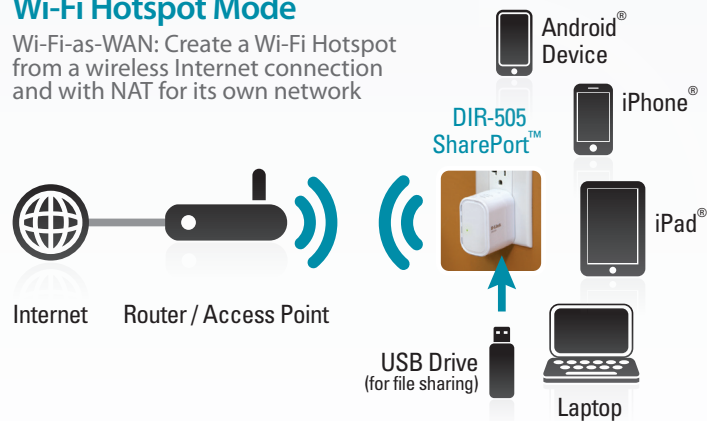
Phone charger

### Router Mode

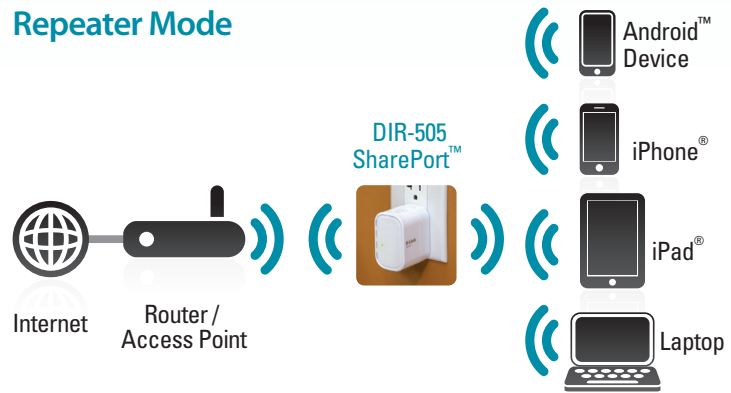


### Wi-Fi Hotspot Mode

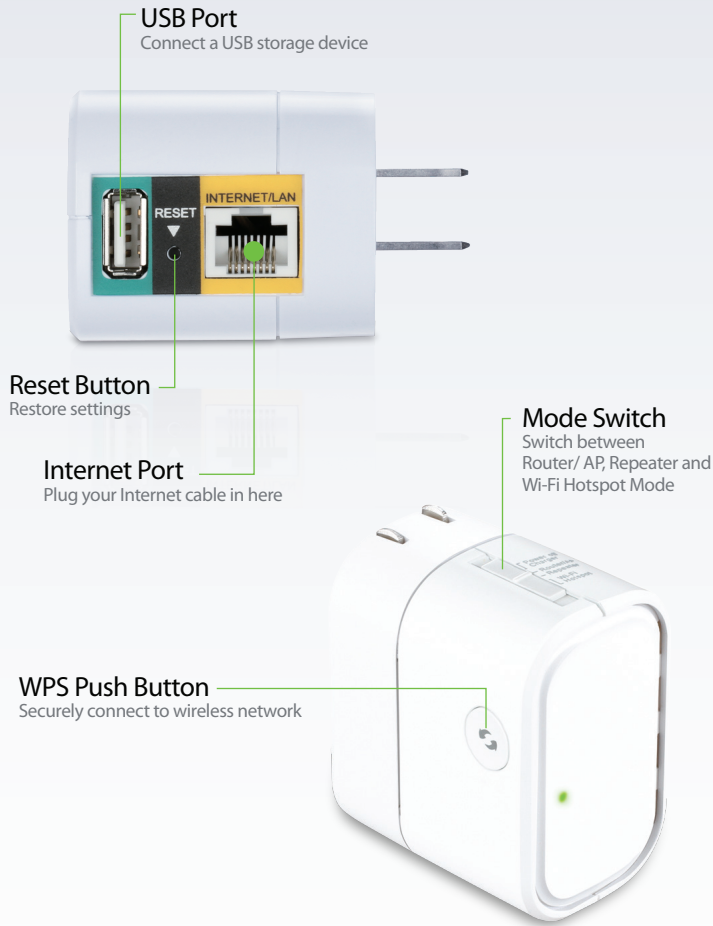
Wi-Fi-as-WAN: Create a Wi-Fi Hotspot from a wireless Internet connection and with NAT for its own network



### Repeater Mode



# DIR-505L SharePort™ Mobile Companion



## Technical Specifications

### Standards

- IEEE 802.11n
- IEEE 802.11g
- IEEE 802.3
- IEEE 802.3u

### Wireless Modes

- Wi-Fi Hotspot Mode
- Router/AP Mode
- Repeater Mode (USB sharing capability disabled)

### Wireless Frequency Range

- 2.4 GHz to 2.4835 GHz

### Antennas

- Internal Antenna

### Security

- Wi-Fi Protected Access (WPA/WPA2)
- WPS™ (PBC)

### Advanced Features

- SharePort™ Mobile app for iOS
- Quick Router Setup app for iOS
- VPN pass through
- Guest Zone Support
- UPnP™ Support
- Web File Access Support
- Wi-Fi WMM Quality of Service

### Power Input/Output

- Input: 100-240V, 50/60Hz
- Output: 5V, 1.2A

### Advanced Firewall Features

- Network Address Translation (NAT)
- Stateful Packet Inspection (SPI)
- MAC Address Filtering
- DMZ Support

### Device Management

- Web UI

### Diagnostic LEDs

- Power/WPS

### Operating Temperature

- 32 to 104 °F (0 to 40 °C)

### Operating Humidity

- 0% to 90% non-condensing

### Certifications

- CE
- Wi-Fi Certified
- FCC
- IC
- DLNA

### Dimensions

- 2.77" x 2.60" x 1.69"  
(7.036 x 6.60 x 4.29 cm)

### Weight

- 0.23 lb (104.3 grams)

### Warranty

- 1-Year Limited Warranty\*

<sup>1</sup>Actual data throughput will vary. Network conditions and environmental factors, including volume of network traffic and network overhead, lower actual data throughput rate.

<sup>2</sup>The attached devices must have CAT5 or above Ethernet cable.

<sup>3</sup>24/7 Basic Installation Support is available only in the USA for the first 30 days from date of original purchase.

<sup>4</sup>1-Year Limited Warranty available only in the USA and Canada.

<sup>5</sup>Computer must adhere to Microsoft's recommended System Requirements.

<sup>6</sup>D-Link cannot guarantee full compatibility or proper playback with all codecs.

<sup>7</sup>D-Link does not guarantee compatibility with USB drives larger than 250GB capacity.

References to speed and range are for comparison purposes only. Certain conditions and factors, including USB storage capacity and speed, video quality, and file source may affect performance. Product specifications, size and shape are subject to change without notice, and actual product appearance may differ from that depicted herein.

## For more information

**U.S.A.** | 17595 Mt. Herrmann Street | Fountain Valley, CA 92708 | 800.326.1688 | dlink.com **Canada** | 2525 Meadowvale Blvd | Mississauga, ON L5N 5S2 | 800.361.5265 | dlink.ca

© 2012 D-Link Corporation/D-Link Systems, Inc. All rights reserved. D-Link, the D-Link logo, mydlink and the D-Link RoHS logo are trademarks or registered trademarks of D-Link Corporation or its subsidiaries in the United States and/or other countries. Other trademarks or registered trademarks are the property of their respective owners. Visit [www.dlink.com](http://www.dlink.com) for more details.

Updated 8/31/12



**D-Link**<sup>®</sup>  
Building Networks for People